

Parish Profile



ST ALBAN'S FULHAM

2 MARGRAVINE ROAD
LONDON W6 8HJ





CONTENTS

Introduction: Bishop Graham Tomlin

Section One: Summary of Profile

- Welcome
- Identity and Values
- Links

Section Two: The Broader and Organisational Context

- Diocese of London
- Staffing, leadership structure and teams
- Finances Overview

Section Three: About the Parish

Section Four: About the Church

- Fellowship at St Alban's Fulham
- Outreach at St Alban's Fulham
- Parish Connections and Affiliations
- Church Buildings
- Looking forward; growth, opportunities and challenges

Section Five: The Minister We Need

Appendix

- Fulham Reach Ward 2018 census info

Introduction from Bishop Graham Tomlin

St Alban's, Fulham is a lively local church in an attractive and varied part of West London. Replanted in 2010 by a combined team from St Paul's, Hammersmith and Holy Trinity, Brompton, it worships in the Charismatic Evangelical tradition, and has a committed core membership who are eager to pursue the church's vision to see an awakening of faith in Jesus transforming Fulham and beyond.



St Alban's offers an exciting post for a priest who can bring prayer, vision and commitment to the mission of the church here. Without repeating information in the Archdeacon's letter about the link to St Paul's Hammersmith accompanying this profile, our intention and desire is that the woman or man appointed would have St Alban's as their absolute focus; living in the St Alban's vicarage, leading St Alban's in mission, and attending to the local and pastoral needs of the parish. The St Paul's connection could and should be a useful support and offer resources and help that otherwise would not be available, and in no way a hindrance to committed and focused leadership.

This next leader will need to provide the imagination and vision to take the parish into this next season, drawing the existing members together around a clear sense of identity and purpose, so as to open up opportunities for new areas of evangelism and growth. St Alban's has had a good ministry amongst students and young professionals, and this is likely to be a key area of focus for the future. Responding to the challenges, and to the opportunities and discoveries, that the last two years under the pandemic have brought will be another important aspect of the role.

This post could be suitable either for someone seeking their first leadership role after curacy, or equally well-suited to someone with incumbency experience looking for a fresh challenge in their mission and ministry. The Diocese of London, and within it, the Kensington Area, is a supportive place in which to live and to minister. The new Diocesan Strategy 2030 emphasises the need for clergy well-being, alongside the broad ambitions of Confident Disciples, Compassionate Communities, and Creative Growth, all within a church that is seeking to grow younger, safer, and more culturally diverse in its leadership.

The local Deanery and Chapter functions well, and there are good colleagues close by in neighbouring parishes. The Deanery is a part of an Episcopal Area that has a sense of unity and missional direction, rooted in the church's core purposes of Worship and Witness together.

The Rt Revd Dr Graham Tomlin
Bishop of Kensington



Welcome to St Alban's Fulham

We pray this profile will help you discern as to whether St Alban's is the place for you to fellowship, lead, and join with our staff, PCC, leadership team, volunteers and congregation in following Jesus and co-establishing God's Kingdom with Him in our community as our new minister.

"St Alban's is a local church that becomes your London home and family. City living can be lonely and busy – something that St Alban's will always have to contend with – but it's a place where you can come as you are and will always be able to find someone who loves and supports you. Despite challenging times, it never fails to be a place of encouragement."

CHURCH MEMBER

In the late 1800's a corrugated iron mission hut named 'St Alban the Martyr' was established in the community. This tin shack was then made into a permanent building initiating more than 100 years of Christian mission, service and prayer, and stands in an area that is now home to more than 10,000 people. St Alban's Fulham is situated in West London, in the London Borough of Hammersmith and Fulham on Margravine Road, London, W6 8HJ. The church closed in the early 2000s but reopened again in 2010 with a new plant, from St. Paul's Hammersmith and HTB, with a vision to see an awakening of faith in Jesus transforming Fulham and beyond.

The stripe in our logo symbolises journeying together in the Way of Jesus. 11 years on in our mission, we're keen to partner with our new minister in pressing into all that God has for this community in the next chapter of our journey. We continue to equip and release our family to pursue their purpose here in London as well as across the UK and beyond, whilst focussing on building community and being a loving and hospitable presence in our neighbourhood. Despite the challenges of the pandemic, we continue to experience God's faithfulness, with weekly evidence of small but steady growth with a



deepening of fellowship in Spirit and Word. Our electoral roll stands at 86 adults as of April 2021, with an average weekly attendance of 34-44 adults, 7 children and 3 youth. Our congregation is typical of the population of West London, with a mix of backgrounds, ages, students, professionals, singles, married couples, families, and retirees.



"St Alban's is a place where all are welcome. It's a place where you are introduced to Jesus and who He is through the word that is spoken on Sunday and through the community. It's a place where you can wrestle with life's challenges and celebrate life's wins. It's a place that feels like home."

CHURCH MEMBER

St Alban's offers a loving, committed and faithful community of local people passionate about learning what it means to be a local church, growing in faith together and responding to the needs of our neighbourhood. St Alban's has always been brimming with potential to be a powerful beacon of hope within an urban setting that is a stark juxtaposition of both wealth and deprivation in the Fulham Reach Ward within the London Borough of Hammersmith and Fulham.

Our prayer is that we can continue to grow in faith – discipling our congregation into a deeper relationship with Jesus and one another through being attentive to the Spirit and the word of God. We desire to cultivate both deep and wide roots, developing intergenerational relationships across our community, whilst widening our reach in Fulham and beyond. With Christ-centred, wise and discerning leadership that is informed by God's Word and filled by His Spirit, we ardently believe St Alban's can continue to realise its potential.



Vision, Identity and Values

St Alban's Fulham is part of the Church of England and worldwide Anglican Communion. We hold a charismatic evangelical theology and spirituality with an incarnational approach to mission. We aim to continue learning together as to how to consistently express our identity and values in the love, guidance and providence of Jesus, committing to the faith uniquely revealed in the Bible and confirmed in the catholic creeds.

Our Vision:

To see an awakening of faith in Jesus, transforming Fulham and beyond.

Our Identity Statements:

We pray all members of and visitors to St Alban's would know they are loved, have purpose and don't have to do life alone. We see this happen as we individually and as a community draw closer in relationship with Jesus, so that our lives are fully transformed.

- You Are Loved: We are rooted and established in His love (Ephesians 3.17).
- You Have Purpose: We are called into relationship with Jesus, to love God and to love our neighbour (Matthew 22.37-38).
- You Are Not Alone: We are adopted into God's family (John 1.12).

Our Value Statements:

We encourage one another to continue to seek new and creative ways to live out these statements individually and collectively as we journey together and serve our community.

- We Seek to be Christ-centred: We seek to follow Jesus and allow ourselves to be transformed by him in all we are and do, and help others pursue him (John 14.6).
- We Practice Hospitality: We seek to welcome the other, welcoming both stranger and neighbour so that they may be known and draw closer to God (Matthew 10.40).
- We Build Community: We seek to build community to express the beauty of what it means to be a part of the dynamic family of God. (1 Corinthians 12.12).
- We are Servant-Hearted: We seek to serve and encourage others, to be aware of the needs of those around us and help carry each other's burdens (Philippians 2.5-7).
- We Seek Justice: We seek to learn together about how best we can act justly, love mercy and to walk humbly with God in all aspects of life (Micah 6.8).
- We Learn Together: We seek to hold safe spaces to learn together; connecting church, community and the culture we live in (Romans 12.2).

Links:

Website: www.stalbansfulham.org

YouTube: <https://www.youtube.com/channel/UCNpRbXYMFT00vCO5RyUPuTg>

St Alban's Instagram: @stalbansfulham/

St Alban's Facebook: @stalbansfulham

St Alban's Youth Instagram: @stalbans.youth

St Alban's Film Forum Facebook @stalbansfilmforum

Diocese of London

Within the Diocese of London, together with 20 other parishes, St Alban's Fulham sits in the Deanery of Hammersmith and Fulham, one of six deaneries across the Kensington area overseen by Bishop Graham Tomlin. The Diocesan Vision 2030 is 'For every Londoner to encounter the Love of God in Christ'. The vision has three main ambitions:

- *building confident disciples by being committed to learning the way of Jesus, encouraging and equipping one other to live faithfully in the everyday places where we live and work.*
- *building compassionate communities, by responding to the climate crisis and ensuring our churches are centres of spiritual, mental and financial wellbeing.*
- *creative growth: calling the church to be more creative, brave and experimental to reach new people, in new places, and in new ways to ensure every Londoner encounters the love of God.*



In order for these ambitions to be met there are three priorities to focus on; children and youth ministry, creating safer churches and becoming more racially just. This vision sets an ambitious and important framework for each parish to work with. These themes and priorities certainly resonate with the heart of St Alban's as we desire to see an awakening of faith in Jesus transforming Fulham and beyond through following Jesus together and responding to the needs of our neighbourhood. More details about the Diocesan 2030 Vision can be found here: www.london.anglican.org/our-2030-vision/

"God wants to see us pull our congregation in to make us apprentices to Jesus, following his lifestyle, instead of just "church-goers", so that we can then pour out into the community from an overflow not an obligation. I think God wants a radically counter-cultural community of people following the way of Jesus in Hammersmith and Fulham."

CHURCH MEMBER

St Alban's response to the 2030 Vision and Church of England initiatives

Our first value statement is to be Christ-centred, to follow Jesus and allow ourselves to be transformed by him in all we are and do, and help others pursue Him. Being mindful of the enormous individual and collective challenges the pandemic has presented and the need to disciple and care for the wellbeing of our community at this time, we set a simple intention to regroup with, be refilled and restored by Jesus based on His invitation to "come and have breakfast" with Him in John 21:12. This parallels the physical regrouping of our community, meeting in person after having met online and socially distant during the heights of the pandemic, and continues our focus on being a hospitable and welcoming presence in Fulham, creating a bridge between the church and the neighbourhood wherever possible.



We create confident disciples by encouraging all members to be embedded in a midweek Connect Group and inspiring all to explore their giftings and purpose by serving on a team. Recently we started using a resource recommended by the Diocese – Pete Scazzero’s ‘Emotionally Healthy Discipleship’ course – to facilitate discipleship through a new monthly gathering called ‘Abide’ alongside our Connect Groups. Abide evenings aim to provide a safe space for our whole community to go deeper in relationship with God and with one another whilst sharing a meal and reading the bible together.

We align with the Diocesan priority to focus on children and youth ministry in order to positively impact our community. We run an active youth and children’s ministry on Sundays. Our detached youth work project has been running since 2010 and stemmed from the awareness that the only local youth club (Fulham Cross) had been closed by the Council, leaving a desperate need for youth work provision. We employ a full-time Youth and Community Worker, who is supported by a part-time Assistant Youth Worker and a dedicated group of church members who volunteer and help run the weekly youth clubs for young people aged 8–11 and 12–16 years. We engage young people in a safe environment and encourage them to build confidence and positive relationships with adult role models. We aim to build a bridge between the church and the neighbourhood, meeting the needs on our doorstep and desiring to see youth and families welcomed into St Alban’s through our detached youth work.

We commend the Diocese for recognising the need to strive for racial justice and embedding this in the 2030 Vision. We recognise as a church that we need to undergo deep reflection in this area. In August 2020 we came together as a PCC and congregation to discuss our position as a church community and learn from one another and to recognise our own biases or blind spots. The open meeting was not an end in itself, though it marked a point of special openness and vulnerability in our community reflecting our values of creating safe places to learn together and seeking to act justly, love mercy and to walk humbly with God in all aspects of life.

We welcome the work the Church of England has undertaken to prepare the whole church for reflection and conversation in 2021 regarding sexuality and relationships through the Living in Love and Faith initiative (LLF). Our staff and PCC have just begun to engage with the materials and would welcome wisdom, discernment and direction from our new Minister as to how to engage faithfully with scripture and the materials of LLF, whilst understanding the prevalent cultural narratives in order to prayerfully inform our pastoral response.



Staffing, leadership structure and teams

In addition to our Youth and Community Worker and Assistant Youth Worker, our new Minister would be supported by our Operations Manager, Fundraising Manager and a committed PCC. We have an Ordinand on staff with us until their curacy begins in August 2022. Our Ordinand has been responsible for orchestrating our formational teaching series, assisted by a lay teaching team; collaboratively organising Sunday services with our wider leadership team and leading worship. We currently have 3 American missionaries on placement with us serving as Community Pastors part-time as they serve in their distinct callings with Greater European Mission (GEM). We have partnered with GEM since October 2018. Our Community Pastors have been responsible for administering our Connect Groups, social media output, have contributed to our teaching series and have helped to collate content and stream services online during the pandemic. Until recently, we also had a dedicated Student and Worship Pastor on staff to oversee our student work and worship ministry. We sadly but excitedly released our incredibly gifted Student and Worship Pastor to ordination training in the summer of 2020.

"St Alban's has lots of gifted individuals in its family. Their gifts in leadership, music and worship, and teaching are all opportunities to expand the reach of the gospel in Fulham and Hammersmith toward the transformation of the world."

CHURCH MEMBER

St Alban's is blessed with a strong core team of lay speakers, service and worship leaders. A dedicated team of volunteers serve regularly across our weekly and Sunday teams which include Hosting, Production, Students, Youth and StAK (St Alban's Kids ministry) and Connect Groups.



"Being part of St. Alban's Fulham has given me the opportunity to serve the community as a member of the teams and make meaningful friendships with other church members."

CHURCH MEMBER

"I've received spiritual mentorship and grown in my faith. I've had the space to learn more about myself, my faith and to grow in new skills."

CHURCH MEMBER

Just before the pandemic we clarified our serving structure and leadership strategy, including creating a leadership handbook. The purpose of the project was to clearly define roles, responsibilities, expectations and communication channels. Within each team there is a 'Lead' and a number of 'Co-ordinators', depending on the size and nature of each ministry. We are looking to embed termly leadership gatherings for those leading across St Alban's to worship and pray together – regular times as a leadership team to collectively capture our vision, identity and values, so as to further embed these in the teams and areas we lead. In the past we have invested in a leadership weekend away to create a cohesive and collective leadership journey, inspiring peer-to-peer leadership support and community. As we return to regular activities, we'll be looking to establish the leadership structure and communication channels more succinctly.

During the interregnum, the PCC has taken up oversight of our teams, with certain members having responsibility for line management and working with Leads to ensure stability and accountability.



Serving structure as of March 2020 (implementation partly suspended during the pandemic)

Finances

2020 was a tremendously unsettling year on a local and global scale, and its impact will continue to be felt in the coming years. However, we could witness the faithfulness and generosity of our congregation in seeing and fulfilling our needs – both financially and as a community of believers coming together to pray and serve our church. At year-end 2020, the church's financial position was in good standing with over £100K of reserves, around £61K of which may be used for general operating expenditures. However, seeing the large deficit in our general reserves from the previous year, the 2021 budget highlighted the need for ongoing vigilance going forward. Common fund contributions remain a priority for St. Alban's and have been maintained even during challenging times.

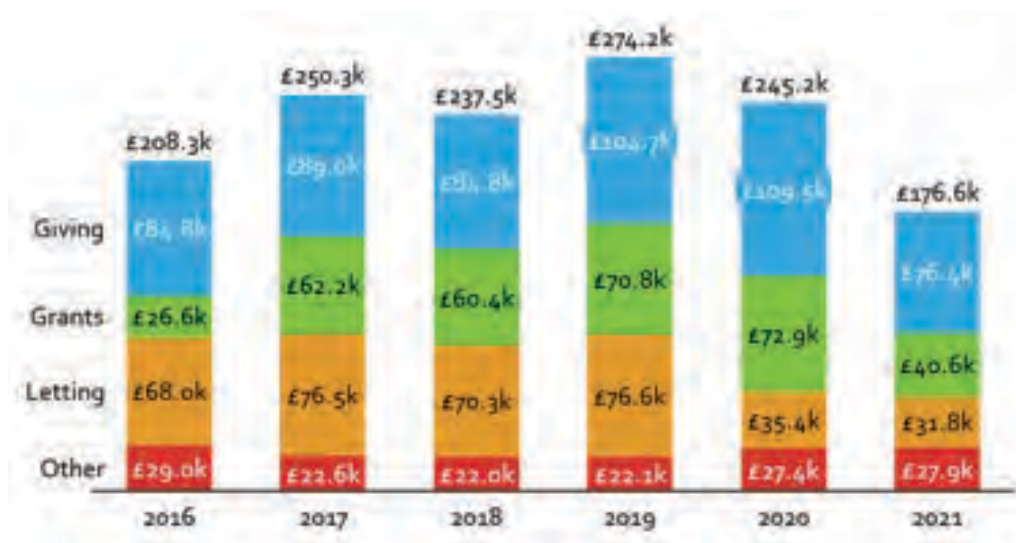
Being a charity, our mission is not to make a profit but rather to utilise our funds to serve our community. As a result, our net surplus position oscillates between being positive to slightly negative as we build up reserves one year and typically spend them within the next year. For the last 2 years our net surplus has been close to zero by year end as we've tended to accumulate and spend balances within the same year. Our cash balances are currently stable at c.£100k including reserves.

The financial situation of the church for 2021 is pictured on the next page.

Income

In addition to a base of faithful givers tithing through regular standing order using the Parish Giving Scheme, our income profile is supplemented by grants as well as letting of the Hub (our church hall next to the church on the campus). We employ a Fundraising Manager to assist us in sourcing grants mostly to support our Youth Workers' salaries and the work they do. In regular times, our income is generally 1/3 regular giving, 1/3 grants and 1/3 rent, with grants playing a bigger role currently.

The Hub is currently on the market for let and once a tenant is secured we expect to see an additional £55-£60k per annum income. Our income streams are steady and well diversified despite being lower in 2021 due to the Hub not being currently let as well as reduced giving during the pandemic.

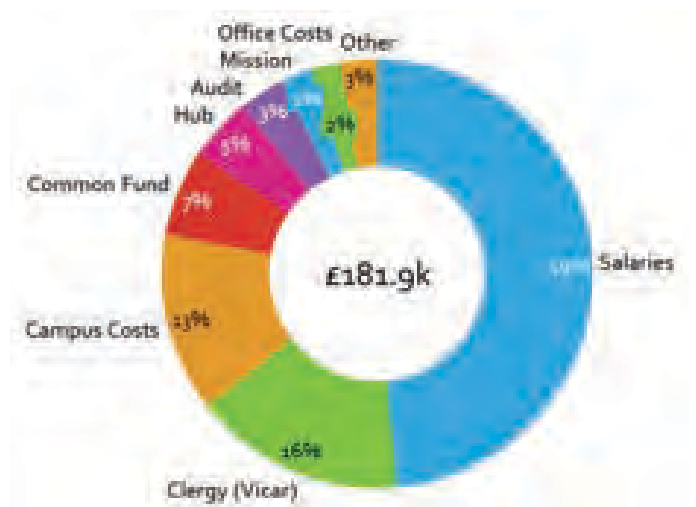


Income 2016–2021

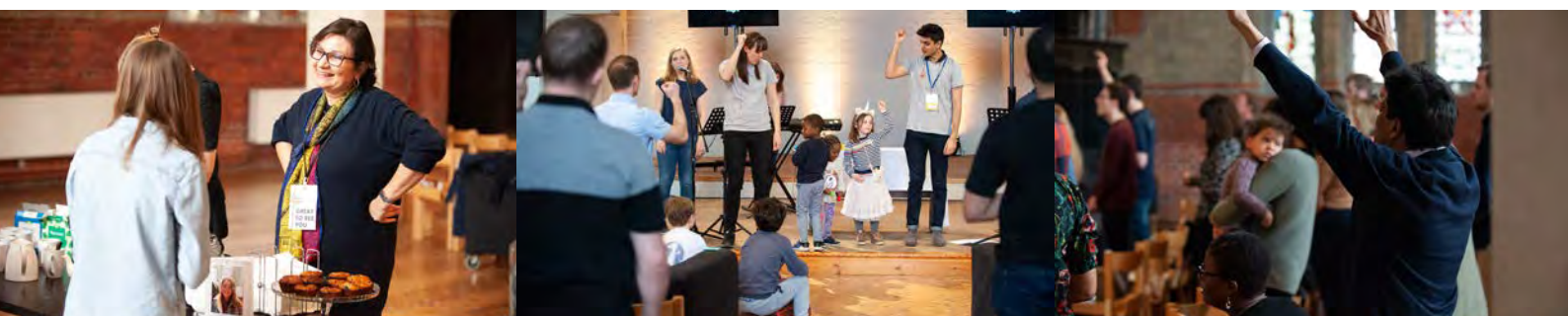
Expenses

2021 expenses amount to £182k of which c.50% goes toward salaries of staff. Currently there are four individuals on monthly payroll in addition to the Ordinand and missionary work which is unpaid for.

As our minister's stipend is a locally supported cost, this has not been payable during the vacancy. We expect to be in a position to shore up some additional liquidity over months to come as we carry a lighter cost base. Campus costs and Diocesan common fund contributions represent the 3rd and 4th largest cost item respectively this year.



Expenditure



Future projects and aspirations:

- We would like to build our staff team to support our vision for growth, including recruiting into the Student and Worship Pastor role.
- We are working towards sustainable income generation from the site and congregation, with the aim of reducing our dependence on grant making bodies. Large letting contracts and space hiring contracts are being sought to provide sustainable income, and reviews of expenditure are being regularly undertaken to keep the church finances under good stewardship.
- We aspire to build a long-term strategic vision for the Hub, which can help secure regular income as well as provide us with sustainable and creative opportunities, aligned with our values and mission, to serve our neighbourhood.
- We would like to be in a position to fund developments to our campus site in support of our vision as outlined in section 4 under ‘Church Buildings.’



About the Parish

For the local inhabitant, the parish feels like the best of both worlds between, on the one side, living in West London with a young population bringing energy and creativity to local life, and on the other side, belonging to a local community with a good family vibe, friendly neighbourhoods and households that have been living in the area for a long time, therefore mitigating the feeling of transience you can experience in other parts of London.

"I was a reluctant transplant to London, and St Albans has made me feel at home in a city which I find overwhelming! I feel known by people, supported and loved. I have made friends, including flatmates, that have been a huge blessing and source of joy in my life."

CHURCH MEMBER



Fulham Reach Ward Profile 2018

When looking more closely and objectively at the field: the parish is nested in the administrative area called the Fulham Reach Ward, which extends from the Baron's court area south to Lillie Road and west to the River Thames. The area includes as a main landmark the buildings of Charing Cross Hospital, and this has a bearing on St Alban's congregation, as we enjoy the presence, involvement, and energy of a large number of medical students and young doctors.



The make-up of the population in the Fulham Reach Ward is mostly educated, skilled and well-paid professionals of working age between 20 and 60 years old. A variety of cultures are present with 44% of the ward population being foreign-born, including a mix of Asian, Black and White ethnicities. The area is considered affluent, although pockets of poverty and deprivation with social and employment issues are also prevalent, particularly around the Bayonne Road estate and the Field Road/Margravine Estate of which St Alban's is nestled between. These estates are juxtaposed with richer residential areas. To put things into context within a socio-economic perspective, the local poverty rate of 30.5% in the wider borough of Hammersmith and Fulham is above the London average of 27%. In our church we are well-aware of this situation and want to make sure we address the poorer members of our community with messages and actions of support, help and hope.

The parish area offers a large choice of places and amenities for people to meet and socialise, cafés, restaurants and pubs, including small breweries, greens for sport and picnics. It is ideally situated along the river Thames with lovely parks such as Bishop's Park, Fulham Palace Gardens, Hurlingham Park and Parson's Green. A long riverside path is available for family walks and cycling.

Sports are well represented in the borough, for both entertainment and practice, with the Fulham FC and Chelsea FC stadiums, the Queen's Club for tennis championships, including Parkrun in Bishop's Park and a number of swimming pools, gyms, bowling alleys and even polo fields. Cultural life is vibrant in the neighbourhood, with a wealth of cinemas and theatres to hand, ranging from iconic venues such as the Hammersmith Apollo to quirky off-West End theatres such as the Baron's Court theatre. A range of the main supermarkets are available within a short walking distance of the vicarage. A brilliant independent coffee shop, a staple of many a Londoner, is just opposite the church campus.

Hammersmith and Fulham has a mix of independent, state, church and academy schools on offer with a range of Ofsted ratings from 'good' to 'outstanding.' Some primary and secondary schools within close reach of the vicarage include Sir John Lillie Primary, St Paul's CofE Primary, Fulham Cross Girls', Lady Margaret School and Fulham Cross Academy.

As a well-connected West London borough, Hammersmith and Fulham is a hub of transport networks including, within one km of our church, several tube lines, a major bus station and the overground, giving easy access to the rest of Central London with all it has to offer and to further afield day-trips to the Greater London area, for instance Kew Gardens or Richmond Park. The M4 and A3 motorways are in close proximity, allowing for a relatively quick drive to access routes to the South West, South or South East areas of England.

We believe that the unique mix of cultures, generations and economic backgrounds of our community makes for a very stimulating and exciting environment to help people follow Jesus, and many opportunities for our church to launch initiatives to reach, support and assist all layers of the population, from parents and toddlers to youth groups, students, young professionals, and older people.



Fellowship at St Alban's Fulham

St Alban's is a parish church with our congregation largely based reasonably near the church. Our congregants are a mix of both British nationals and internationals, with representation from countries such as Sierra Leone, Nigeria, South Africa, Poland, France, Turks and Caicos, Argentina and America. St Alban's is made up of a diverse people committed to growing in faith and friendship together and to the vision of the local church playing a significant part in seeing an awakening of faith in Jesus transforming Fulham and beyond.

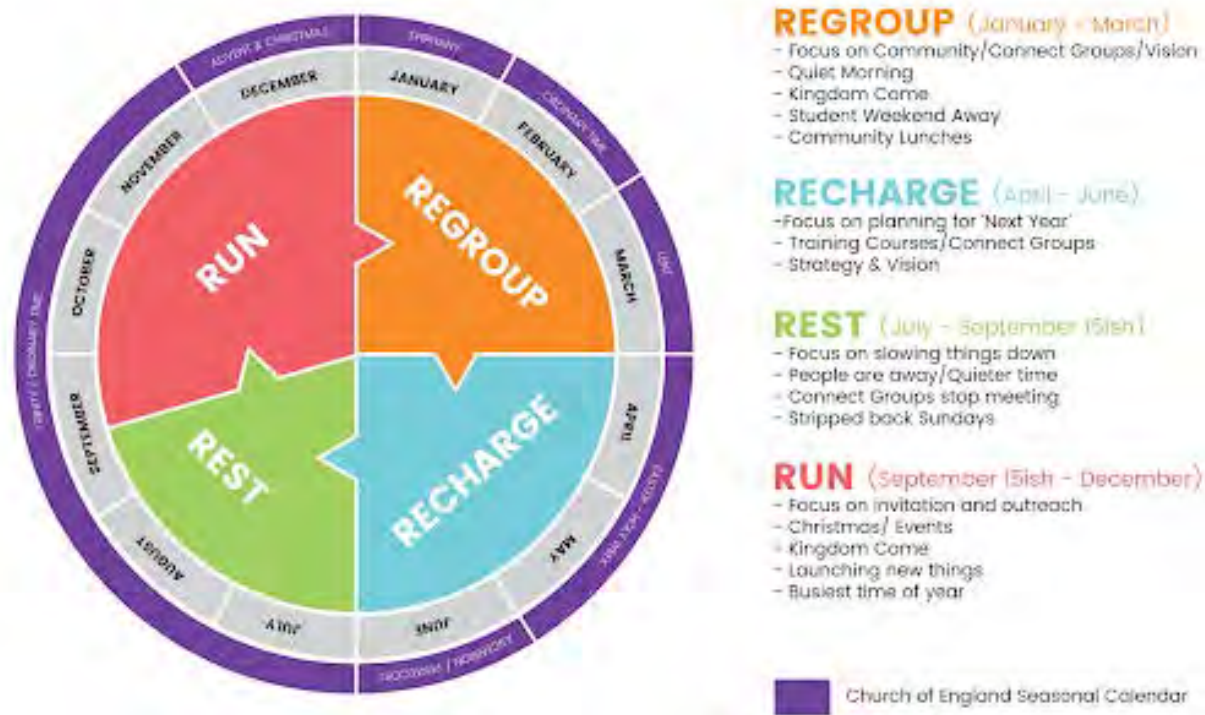
"I cannot imagine living in London without St Alban's. It's given me family, community, encouragement and challenge. In other churches you're just a face but at St Alban's you're known. It's pushed me to grow and the community supports you when you're brought low. At times it has frustrated me, as with any time many different people try to find common ground, but nowhere else would that frustration also be felt at the same time as such love and care."

CHURCH MEMBER



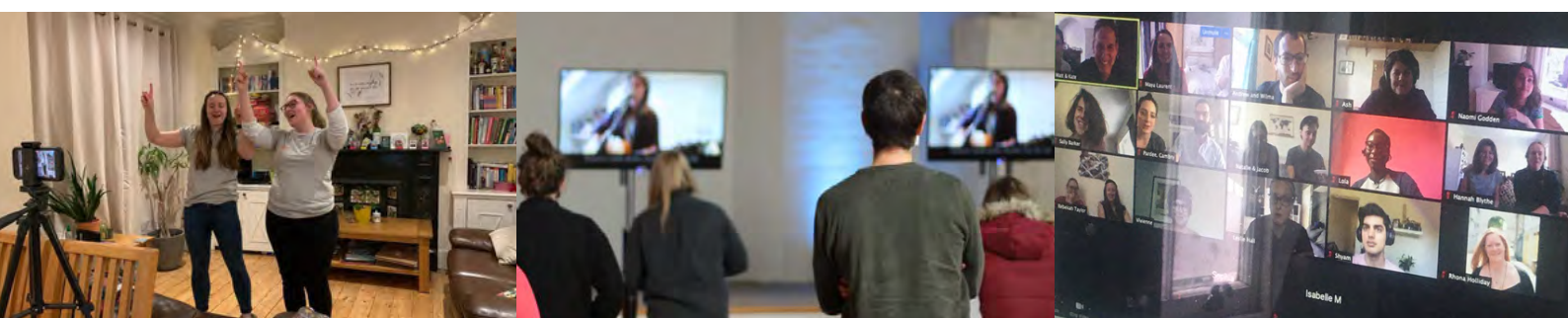
Church Seasons

Each year we move through four distinct seasons each with a particular rhythm and focus within our church and aligned with the CoFE seasonal calendar: Regroup, Recharge, Rest and Run. Since March 2021 we have intentionally remained in the season of 'regrouping', focussing on building community and fellowship as we continue to return to gathering after the heights of the pandemic.



Covid response in facilitating services

We entered into the pandemic adjusting rapidly to support our community despite unpredictable and unprecedented needs. As our doors closed, church online began as pre-recorded content live streamed with interaction through comments and periodic post-church video conference calls to meet, pray and fellowship. When possible we moved to in-person services with live streaming for those joining us from home. We have now fully returned to in-person services, recording services for our YouTube channel and live streaming when necessary due to the ever-changing situation.



Services

We share a charismatic-evangelical expression of faith and enjoy a contemporary style of worship. We are inspired by the early church where God stirred people to faith through the proclamation and the demonstration of the good news of Jesus, in the context of generous and sacrificial fellowship and growing in God's word with a priority of worship and prayer. Despite all the challenges of 2020/21, God has continued to stir up a heart of worship and a thirst for God's word in our church, and expanded our notions of what it means to be a worshipping community desiring biblical formation. We are blessed with a servant-hearted team, including talented musicians and speakers that have continued to faithfully lead our services.

Our 11am service embodies our love for extending a warm welcome, as well as inspiring purpose with a comforting message letting people know they don't need to do life alone. We encourage community through providing a simple café open from 10.30am and inviting all to continue fellowshiping by having meals together after the service in local pubs, cafés, picnics or in each other's homes, Covid restrictions permitting. In our teaching series we have recently looked at what it means to make Jesus the foundation of our lives and to be a thriving church. Collectively we have been brought closer to Jesus through our Spirit-filled worship and prayer times.



We regularly host an 'All Age Service' led by our Youth and Community Worker and our St Alban's Kids (StAK) team with a talk accessible for all ages. Every Sunday we lead inclusive worship for our children. We want StAK (4-11s) and Sunday Youth to know church as a place where they can have lots of fun. We aim to engage our children in early teaching and worship, and provide a safe, enjoyable environment to form friendships with each other and a relationship with God.

"My 8-year old son has interacted with worship in ways we've not seen him do in the past. Even if it seems like he is running around or not paying attention, we've also seen times when he's stopped and sang along, or is singing the songs at home. This has been so wonderful to see as we've talked to him about what it means to worship. So thank you for helping an active eight-year-old understand worship more!"

CHURCH MEMBER

Christmas and Easter are great times of variety and creativity at St Alban's. Our carol services are always a highlight of the year, joyously celebrating Advent together and showcasing the creative sensibilities we hold as a community whilst focussing on inviting our neighbours in. There is a loving attention to detail in how the music is composed, the church space is decorated, and hospitality laid out through mulled wine and mince pies. The carol service is an amazing testament to the teamwork and creativity of our worship team. It is an artful and joyful expression of different musical styles including congregational and chamber choirs, orchestral and percussion performances, and beautifully composed and played pieces.



Our Good Friday service has been a significant part of our Easter programme. Using the framework provided by liturgy, this service creates an opportunity for people to enter into the story of Jesus' death in a more contemplative and reflective way than our other services usually provide. Good Friday has also provided opportunities to open the church for quiet prayer and meditation often with creative ways to help guide our visitors through the stations of the cross. Since St Alban's re-opened in 2010, we have participated in the 'Walk of Witness' – a collaborative event partnering with all churches in the area, Anglican and non-Anglican. Pre-pandemic we joined with St Andrew's, Fulham Fields Church for a poignant sunrise service together in Margravine Cemetery on Easter Sunday, with a fire pit to warm us up, followed by bacon rolls or pastries, alternatively hosted each year at St Alban's and St Andrew's. Our Easter services aim to embody the full spectrum of what it means to be a disciple of Christ – engaging with a theology of suffering and well as of joy. Following the Easter season – we look forward to Pentecost Sunday as an opportunity to baptise those willing through full immersion.



Community Lunches

Food plays an important role in the life of St Alban's. We regularly share meals together to celebrate Jesus, what He has done for us, and to bring us closer as a community. We host community lunches after the 11am service throughout the year to provide an opportunity to socially gather together as a whole community and encourage intergenerational fellowship. Pre-pandemic, we have also encouraged congregants to welcome each other for lunch in each's homes through our 'Hosting Sundays' initiative. Over the summer of 2021 we ran a teaching series called PICNIC looking at stories about food across the bible celebrating the God who invites us to come and eat at His table. After each service we gathered in a socially distant manner in Bayonne park and in the church when possible to continue this rhythm of feasting together.



Prayer, Prophecy and Worship

We prioritise a time of prayer every Sunday at 9.45am, with a particular focus of praying for our community, neighbourhood and the future of our fellowship during the interregnum. This is followed by our pre-service prayer time at 10.10am where we commit our serving teams and 11am service into the hands of Jesus, praying for His Spirit to move among us and His Kingdom to be evident through the welcome extended, the word spoken, and the worship sung.

The PCC has historically embedded termly 'quiet mornings' in their calendar to gather in prayer for our community. We have opened these mornings up to our wider leadership team including all staff, leads and co-ordinators under the heading of Prayer & Prophecy. We desire for these times to be an encouragement and inspiration to our leadership team, as we journey together in leading our community, prophesying over the teams and areas we lead as well as the whole community and neighbourhood.

"I often feel moved by the worship and it's so powerful to come together in that way to worship God. I think it's awesome that there's never any sense of performance from the worship team - they lead with such humility."

CHURCH MEMBER





We are incredibly blessed and grateful to have a committed and talented team of musicians and technicians who facilitate contemporary worship. Worship at St Alban's has included a variety of instruments from strings, woodwind, brass and percussion – all are encouraged. The challenges of the pandemic encouraged us to become even more creative and innovative in the way we lead worship. The worship team has recorded over 70 worship songs remotely, including a number of original songs.

Our worship team has facilitated termly Kingdom Come nights – Spirit-filled times of extended worship and creative prayer open to all. These events are jointly facilitated and attended by St Alban's and worship teams of other local churches. We hold regular 'New Musicians Jams' to encourage people to get involved, and provide one-to-one coaching for those who are less experienced. Each term we hold a worship team night, which provides space to build friendships within the team and share vision. We have a Songwriting Group, which meets regularly to share and write new worship songs. The worship team was supported by our Student and Worship Pastor. In their absence, a team of committed volunteers are led by 4 talented members of our congregation including our Ordinand and two PCC members.

As a community we value intentional prayer, worship and prophecy and we would like to encourage more spontaneous room for the Spirit to move through these elements during our Sunday services. Through being open to the prophetic in the planning of our teaching series, topics spoke to the experience of lockdown and helped support our community in a challenging time. We have previously invited The Filling Station to lead us in learning more about prophecy, giving space to wait on God and prophetically praying for each other and our community. We would like to grow in the area of prophecy, creating safe spaces to listen to God together and creatively pray for each other and our community.

Connect Groups

These groups offer a regular time and place for friendship, a chance to pursue a deeper relationship with God, grow in faith and invite others along. There are a variety of ages, interests and stages of life across the groups. Connect groups take place either in homes, in the church building or in local pubs and cafes. Where some groups have returned to meeting in-person, others continue to meet in an hybrid manner alternating online sessions with meeting together where possible.

"The impact of the church has largely been through my Connect Group, which at first was enjoyable and filled with interesting people, but now, having lived through this much of the pandemic with them, has become a group of intimate friends and family-within-the-family. As a foreigner to this country, this aspect of the church's relational work has been very important in my experience of life in London."

CHURCH MEMBER



Outreach at St Alban's Fulham

Mission Action Plan (MAP)

Between 2016–2021 our MAP was to ‘strengthen the church, enlarge the community and maximise our resources.’ Examples of some of the goals actioned during this period include employing a Student and Worship Pastor, appointing a part-time Fundraising Manager, establishing the biannual ‘Older People and Friends’ events, relaunching our 6pm service, launching ‘the ark’ (a weekly parent and toddler group) and publishing our leadership structure and handbook with the aim to clarify roles and expectations.

Covid response to our neighbours in need

In response to the Covid-19 pandemic, we felt stirred to respond to some of the practical needs of our local community. In April 2020 we partnered with the HTB network’s Love Your Neighbour campaign, which primarily involved delivering free food parcels to those who were isolated, unwell, or facing financial hardship. We delivered approximately 250 food parcels to households in our local neighbourhood, as well as making many friendly phone calls to those who were struggling. We engaged with 28 households, of which only four were known to us before. Twenty-two volunteers have been involved in the campaign, many of whom served every week from April 2020 – June 2021.

At Christmas in 2020, we joined with the nationwide ‘Love Christmas’ scheme, with the ambitious aim of delivering one million Christmas boxes to those in need around the country. Volunteers from St Alban’s hand-delivered 50 packages full of treats, games and crackers. Many recipients said they were ‘overwhelmed’ by these unexpected gifts during a very difficult time. We are grateful for these opportunities to serve our community and are keen to continue partnering with local networks, seeking new ways to meet the needs of our neighbours together.



Alpha Course

We have run the Alpha course once a term since 2010, providing a regular opportunity to extend an open invitation to those seeking to know more about the Christian faith to find out more and ask questions in a relaxed and safe environment. Connect Groups have also run Alpha as a tool for outreach and to welcome those exploring faith to St Alban's. We have run Alpha courses online during the pandemic. Alpha makes use of good hospitality and conversation to point others to Jesus. This resonates with our values of practising hospitality, creating safe spaces to learn and be transformed by Jesus, and helping others pursue Him.



Youth Work

Ever since the church reopened 11 years ago, young people have been a key priority area for us as we work towards the vision of seeing a great awakening of faith in Jesus transforming Fulham and beyond. Over 2020/2021 alone we have supported 135 young people through weekly youth clubs, sports activities, holiday programmes and mentoring. Despite the challenges of this time, we were still able to fulfil many of our objectives and have continued supporting young people online, outdoors, and in small groups. The projects are led and coordinated by a full-time female Youth and Community Worker and a part-time male Assistant Youth Worker. A small number of dedicated volunteers, mostly from the student community, support the youth work team. Our Fundraising Manager works closely with our Youth and Community Worker to raise restricted funds for this vital work through public funding and specialised grants.

We have built strong partnerships and trust in the local community, working in successful collaboration with the council, police, local schools, London Borough of Hammersmith and Fulham (LBHF) Youth Offending Team and other key community stakeholders. As a result, we have seen our youth provision make a considerable difference in the lives of local young people, seeing them grow in confidence, develop skills previously not within their grasp and build new friendships in a safe, encouraging and supportive environment.

"Thank you so much for the way you ran Romance Academy at Lady Margaret's School, you were really prepared each week, and ran the session with such wisdom and sensitivity. Thanks so much for devoting your time and energy to help me in my ministry, such an encouragement"

LADY MARGARET'S CHAPLAIN

The weekly youth clubs are open to any young people in the area, with the majority living on the marginalised Field Road and Bayonne housing estates, which are adjacent to the church and are our two project focus areas. Our aim is to engage young people; to reinforce positive role models and strong self-belief, and encourage them to build positive relationships. Many of the youth we work with have limited aspirations and low self-esteem, come from families where Social Services are involved and have little access to play or sport activities.

We offer mentoring sessions, in groups or individually, for young people to meet with a mentor to discuss life, identity and any issues important to them. Our holiday programmes offer a broad range of activities and opportunities that promote health and physical activity, creative arts and a chance to try new things and build young people's confidence. We have delivered a weekly discipleship group for our Sunday Youth and offer termly events such as Youth Alpha for young people from our Thursday and Sunday youth clubs to explore faith. St Alban's Fulham has supported three local schools by providing assemblies, playground support and 'healthy relationship' workshops utilising the 'Romance Academy' resources.

"Our Youth work is a huge part of our engagement in the local community and is a lot of people's only contact with the church. I can see this growing more and more!"

CHURCH MEMBER

After partnering with local tenants' and residents' organisations for over 10 years, we are seen as a trusted and impartial service provider. Our youth work is now well established in the community, and continues to be responsive to the needs of its users.





Student Work

Alongside our youth work, student work has also been a missional focus of St Alban's since 2010. We previously employed a Student and Worship Pastor to oversee this work and as a key part of our missional focus, we are keen to look at filling this role once more when we have completed the interregnum. Our student work has been previously funded by organisations such as the Mustard Seed Foundation.

University students are a core part of the St Alban's community, bringing huge amounts of energy, enthusiasm and depth to our church. We are placed within a stone's throw from the Imperial College Medical School and Charing Cross Hospital, with hundreds of students on our doorstep. We are committed to reaching out to those who do not know Jesus, and helping students within the church to grow deep roots in faith. This is a ministry of 'gathering and scattering' – gathering to grow stronger and more mature, and then scattering to be good news to the world, both during and after university years. We have been blessed to have many students become long standing members of St Alban's. With full hearts we have also sent off many beloved students across the UK and world as they pursue their purpose with a strong faith foundation encouraged during their years being a part of our community.

"I have honestly never felt so comfortable and welcomed-in anywhere before in my life! The people are awesome, and the talks are really practical and focussed on applying the teachings of the bible to our everyday lives. Also, older people in church really invested time in me and my journey with God-helping me with difficult questions and encouraging regular prayer and bible reading habits- which has been amazing in building my faith and led to me loving God even more."

STUDENT CHURCH MEMBER



We have provided a wide range of opportunities for students to be discipled, including weekly small groups, prayer and bible study meetings, a monthly student night called the 'Student Series', and an annual student weekend away. The 'Student Series' has been a regular highlight providing an opportunity to share a meal, worship, pray for one another, and engage with teaching specifically relevant to university life. Over 2020/2021 we've run sessions on topics such as relationships, handling money, rest, singleness and setting priorities. It is deeply encouraging that students regularly bring non-Christian friends to these meetings, several of whom have become regular members of the church. We have recently combined the 'Student Series' with our 'Abide Evenings' to continue to embed our students into the wider church community and provide opportunities for an intergenerational learning space as we journey together in following Jesus.

"Through the busyness of university, I found St Alban's to be a grounding place for me at the start of the week, a type of reset to sit and dwell in God's presence and worship Him. I have also been impacted by the strong sense of community that exists within St. Alban's. I have made friends for life here for which I am very grateful. I have also learned a lot about how the church can engage really well with the community in which it sits."

CHURCH MEMBER

Community Coffee Mornings

A weekly time for fellowship and prayer with an invitational focus to all in the local community, providing a welcoming space, community time, coffee, tea and some snacks. In the short time we have run these mornings since October 2021 we have seen a growing interest for those in the local neighbourhood to drop by for a coffee and some friendly social interaction during the week.



The ark (suspended during the pandemic and interregnum)

We have run a weekly parent and toddler group on Wednesday mornings during term-time. 'The ark' was open to all and included free play, singing and a story. This was a brilliant opportunity to meet new parents and encourage community, contributing to building a bridge between the neighbourhood and the church.

Film Forum: Exploring life through film

Since 2014 we've run a community film night on par with a pop-up cinema, open to all, between the months of October and May. Film Forum expresses our values of hospitality and learning together, creating a safe space as we equip people with the tools to intentionally engage with culture, to watch and listen with curiosity and openness. Watching films together and unpacking them in discussion afterwards creates an easy, non-judgemental space for people to talk about difficult topics in a non-threatening way as well as an opportunity to discuss how to live well with ourselves, in our families, communities and modern society.

The Film Forum team has helped churches across London and England to set up similar events by creating an accessible training resource equipping churches to embed a film night within their ministry. During the first lockdown we created a resource integrated with the teaching series to encourage our community to be watching films together remotely and discussing them online. We are excited to pursue new opportunities to engage our congregation and neighbourhood in our love for story and thinking through the cultural narratives around us.



Older People and Friends (OPAF)

We hold a bi-annual afternoon tea and concert for the elderly in our parish. In the early summer it is a time when the church extends a warm welcome and entertains our older neighbours, getting to know them over a cup of tea and refreshments. At Christmas we hold a lively carol concert with readings, along with Christmas fayre, mulled wine and importantly – a DJ to encourage dancing and fun.

"The care and hospitality is wonderful."

OPAF EVENT ATTENDEE

"I have trudged through the snow for this and how lucky we are to have it all on our doorstep, and that welcome made that difficult walk worthwhile."

OPAF EVENT ATTENDEE

These events aim to enable the older citizens of the community to enter a welcoming space, meet and make friends, have fun and gain a sense of being valued and not being alone. As with all our community outreach, we aim to build a bridge easy to cross between the church and the community. OPAF events create a safe and welcoming space for our guests to be themselves and to meet us, the church. We look to safely hosting these events more regularly as Covid restrictions ease, bringing the elderly of the parish once again into the warmth and friendliness of St Alban's.

"This is such a wonderful event which I feel means a lot to the older generation in our community."

CHURCH MEMBER



Affiliations and Parish Connections

St Alban's Fulham is based with the London Diocese of the Church of England: www.london.anglican.org

Having been planted in part by HTB, we have maintained links over the years as a related church, partaking in FOCUS and partnering with them through collaborative campaigns and initiatives such as Alpha, Worship Central, Kingdom Come and recently Love Your Neighbour (LYN). We also encourage our leadership team to attend the annual Leadership Conference:

www.htb.org/loveyourneighbour
www.leadershipconference.org.uk
www.focus.htb.org

Our youth work is affiliated with the following organisations:

London Youth: www.londonyouth.org
London Sports Trust: www.londonsportstrust.org
Young Hammersmith & Fulham Foundation (yhff): www.yhff.org.uk
Tenants & Residents Organisation (Fulham Reach)

Parish Connections

St Alban's has built relationships with churches across a broad range of tradition and style of worship. We enjoy joining in with the wider church in the area and would like to seek more opportunities to do so. Rev Lesley Bilinda of St Andrew's, Fulham Fields has kindly taken communion for us during the interregnum. Rev Theresa Ramsay from the Church of God Worldwide Mission has preached at St Alban's and we would love to encourage more opportunities for local leaders serving God in the parish to share the Word with us. We have often joined together with St. Paul's Hammersmith in running Alpha and youth events. In the recent past we helped develop a supportive prayer and worship network with St Dionis, co-creating their now in-house 'Furnace' worship event. We've maintained a local supportive network with churches in our deanery and would be keen to learn where we can work more collaboratively in serving our neighbourhoods together.

The Archdeacon's letter accompanying this Profile explains the ongoing relationship with St Paul's, Hammersmith that relates directly to this appointment.



Church Buildings

The church forms a group of three buildings with the vicarage to the north and the 'Hub' (our church hall) to the south. The church is a Grade 2 listed building designed and built between 1894-6 by architects Sir Aston Webb and Ingress Bell, famed for various projects including Buckingham Palace and the V&A Museum.

The Church

The main church space is just over 3600 sq ft, equipped with an office, kitchen, small meetings room, creche, toilets and a small garden to the rear.

"I think we have an amazing building that could be used for so much under the direction of someone with vision and competency! This, to my mind, would be a strong draw to a prospective minister looking at what assets the church has to offer. A great building and campus in a strategic location in London."

CHURCH MEMBER



We have aspirations to develop a rear facing entrance opening onto the Field Road / Margravine estate behind the church. This would create a significant meeting point within the church between the poorer sections of Fulham Reach to the North with the more affluent population towards the South. We would love to see this become a reality as a part of our mission in the next chapter of St Alban's to increase our welcoming and inclusive presence in our neighbourhood. A planned renovation of the church office and kitchen has been suspended during interregnum. We would like to resume this work as soon as we can to ensure we can support our ambitions practically with adequate facilities onsite.

Being a listed building there are various challenges as expected. The Quinquennial Inspection of St Alban's Fulham was carried out on 12th September 2017. The report of the inspection found that generally the church is in good condition. Main recommendations for works focused on the gutter maintenance, roof works for the Hub, and electrics. A full fixed wire testing of the Church and Hub was undertaken in the first quarter of 2020 and all remedial works undertaken.



The Hub

We use the Hub as a space for our weekly youth work clubs as well as our Sunday children's and youth ministry. It is also an income source, as we rent office space to local businesses. The church and the Hub are also available for a wide variety of hiring needs from rehearsal spaces and workshops to courses and photo shoots. The Hub is 2500 sq ft with a vaulted ceiling and plenty of light, and includes a small kitchen and toilets. We are in need of a long-term strategic vision for the Hub, which can help secure regular income as well as provide us with sustainable and creative opportunities, aligned with our values and mission, to serve our neighbourhood.

The Vicarage

St Alban's Vicarage is an 1890's, detached, two-storey house on a corner plot adjacent to the Church and provides the following accommodation:

- Ground floor: study, 2x reception rooms, open plan kitchen/breakfast room, WC, store cupboard
- First floor: 4x double bedrooms, 1x single bedroom, bathroom, shower room, laundry room, access to loft
- Externally: a small wrap around garden lying between the vicarage and the church.
- Parking is via permit in local streets



Looking forward: growth, opportunities and challenges

This is an exciting moment in our community's history as we look forward to what God may have in store for us and our neighbourhood. There is a shared desire for significant growth in number and Spirit in our next chapter together at St Alban's. We asked the members of our community how they would like to see growth happen and what are some opportunities and challenges.

We desire to see growth in and through:

- Depth of faith: "The focus on growth needs to be on depth of faith. Radical faith is attractive and appealing." "I would like to see growth happen in discipleship and our community growing deeper in love with Jesus and our relationship with him."
- Accessibility: "Through local residents joining us" and "new families from the estate becoming Church members."
- Intergenerational church: "I would love to see St Alban's grow in different generations being in community with one another mentoring and discipling one another to a closer relationship with Jesus."
- Relationship: "I would like to see growth in terms of relational depth and vulnerability with people. To be counter-cultural to shallow and transactional relationships in London, and for people to feel deeply loved and known."
- Teaching: "More teaching about how the Bible and Christian faith speak to the social circumstances we live in."
- Social action: Being "actively engaged in social justice and serving our community" with "specific and timely responses to social issues affecting the local community"
- Team: "It would be great to get some more keen beans on board for various teams"
- Learning together: "It's encouraging to see how the congregation are working and learning together to see what this new season of St. Alban's looks like for all of us and how we are open to hear how God wants to speak to us and lead us in this time. It would be great to just see this continue as it has been."
- Numbers: "More people coming to church, more diversity and more participation from older people"



Opportunities available to strengthen our community and widen our impact on our neighbourhood:

- Fellowship with Jesus and one another: “For us to journey together faithfully during a time of uncertainty” and “ensure we are always prioritising rooting in Him together.” “I feel that God wants to continue to grow a passion for worship and a longing for His presence in the hearts of those who walk through the doors of St Alban’s, whether they have just walked in or whether they have been attending for years.”
- Giftings, talents and callings: “St Alban’s has lots of gifted individuals in its family. Their gifts in leadership, music and worship, and teaching are all opportunities to expand the reach of the gospel in Fulham and Hammersmith toward the transformation of the world.”
- Connect Groups: “Expanding on community development through connect groups and other forms could help strengthen the community, which sets up welcome for new people.”
- Serving our neighbourhood: “Make the church a hub for all sorts of community engagement” “We have an estate behind our church that we could find unique ways to foster relationships there.” “I feel that God wants to do more in the community through St Alban’s, growing on what has happened so far such as Love Your Neighbour, youth and community work and working more with the older community in the area.”
- Supporting and collaborating with local initiatives and networks: “I would love to see us develop our LYN (Love Your Neighbour) work in a sustainable way, with more engagement in social justice for our neighbours who are living in poverty. I think one way we can do that is through supporting our local food bank more intentionally.”
- Youthwork: Continue to “offer local youth support” and “include more adults from the church volunteering to be building relationships”
- Young professionals: “Young professionals are often extremely lonely in our city, especially as they fall between student and family work. They often live in lonely setups in flat-shares, and I know many struggle to maintain their faith in this setting. So I would like to see us continue to be a safe place for these people to be known and loved, and to feel like they belong in a community.”
- Older people and families: “Have the church inclusive to all age groups. Not just young people and young professionals.”
- To mature our pastoral care: “We have a great opportunity to formalise a pastoral framework to help care for our community well” including “to create clarity on how we pastor well across complex areas such as racial and social injustice, relationships and sexuality; and financial, spiritual and mental wellbeing for instance”
- Making disciples: “Equip our church family to reach out and serve individually in their workplaces, neighbourhoods, friendships... Equip church members to live their faith out throughout the whole week rather than on Sunday”

Challenges we face as a community journeying together in faith at this time:

- Change: “Lots of change but I believe St. Alban’s has regularly adapted well.” We have had significant leaders leave to plant a new church, to begin ordination training and to relocate outside of London. “It’s completely understandable for us to feel a bit light on the ground and aware of gaps that haven’t been filled.”
- Returning to a gathered church after the heights of the pandemic: “to stay connected as a body, not isolated” as “it’s still hard rebuilding community after being apart for so long.” “It’s also a challenge to work out what serving looks like post-pandemic when burnout and fatigue is high – especially in a church with a majority of professionals with limited time.” It’s a challenge to have “clarity about where to spend our efforts”
- Relatively young and small church: “At times we can feel time and money poor, and those who are engaged are overburdened. There are limits to our financial power that have implications for what activities we can do.”
- Transient versus permanent community: Our community is “split between high turnover of people only in London for 1-2 years, and people who are committed and have been at St Alban’s for years and have no plans to leave soon.”



The Minister we need

We are looking to recruit a full time minister, mature in their life with the Spirit, immersed in and informed by the word of God, and called into leadership of the local church. Our new minister will be able to disciple our congregation into a deeper relationship with Jesus and one another; leading to the transformation of Fulham and beyond. They will be able to maintain momentum in strategically leading St Alban's through a season of growth, help us continue to serve our neighbourhood through establishing collaborative and sustainable ways to meet needs and most importantly, provide stability for our community and help us thrive whilst we continue to face challenges in these uncertain times. Though foremost, the candidate will be a Christ-centred, wise and discerning leader to guide St Alban's into the next chapter in the life of our community.

Leadership Attributes

We would welcome a minister who understands, exemplifies and integrates our vision, identity and values, as described in section one, into their ministry. St Alban's needs a wise and discerning minister who is visionary, pastorally-orientated and servant-hearted who can lead, love and serve the local church with their head, heart and hands. In particular we are seeking a candidate who embodies and can evidence the following attributes:

Leading with the head:

- A visionary leader who with wisdom and discernment can develop and implement vision effectively and can bring focus and direction to our ministry.
- A biblical teacher who can provide a biblical lens through which to understand the culture around us and the counterculture of the Way of Jesus and in so doing disciple counter-cultural followers of Jesus so as to transform Fulham and beyond.
- A strong communicator who is able to clearly communicate the gospel, vision and values to all stakeholders of the church.

Leading with the heart:

- A relational leader, who is able to pastorally guide a diverse community from different backgrounds, cultures and traditions with a broad range of theological beliefs and who are in various stages of life.
- A parish minister, who is a visible neighbourhood leader, passionate about growing the local church.

Leading with the hands:

- A discipler with experience and willingness to grow mature disciples transformed by Jesus.
- A collaborative and practical leader with a servant-heart ready to lead and serve in a variety of capacities.
- A good steward of existing resources to maximise their potential.

Key Responsibilities

Being a local church with a small team, St Alban's requires a well-rounded leader with a broad skill set, a practical approach and a healthy self-awareness of their strengths and personal limitations. Some key responsibilities of the role include:

Leadership

- With wisdom and discernment, prayerfully develop and deliver a mission, discipleship and pastoral strategy. Collaborate with staff, PCC, teams and the wider church membership to accomplish missional aims and objectives.
- Hold and facilitate in depth conversations on topics such as economic justice, racial justice and biblical sexual ethics.
- Provide clarity on the roles, responsibilities and expectations of leaders across St Alban's.



Pastoral care and discipleship

- Provide wisdom, stability and pastoral care for a community experiencing change and diverse challenges.
- Create and facilitate formative discipleship structures that intentionally invest in and spiritually mature our congregation, including leading on formalising baptism and confirmation preparation.
- Promote the wellbeing of the congregation. Actively safeguard staff and team against burnout.

Management

- Manage staff and teams effectively. The candidate will be able to demonstrate a reasonable working knowledge of HR practice and policy either within a church context, or previous non-church based role.
- Develop and grow the existing staff and team, and bring new volunteers onboard. Inspire purpose and nurture giftings and potential within congregational members.
- Develop new and existing collaborative relationships with local networks and churches to support our vision.

Communication

- Preach a clear gospel message and utilise liturgy well to engage others in accessible worship.
- Formalise communication channels across the leadership team for the purposes of prayer, encouragement and operations. Regularly communicate our vision, identity and value statements verbally and practically through action to all church stakeholders.
- Facilitate operational and team communications in person whilst supporting these through good and effective use of communication tools such as WhatsApp, Slack, email and Zoom.

Planning and managing resources

- Bring vision, direction and completion to building renovations and campus site developments. Create a long-term strategic vision for the Hub.
- Together with the PCC, work towards sustainable income generation from the site and congregation, reducing our dependence on grant making bodies.
- Discern and act upon effective ways to use the church's resources creatively to meet the needs of our neighbourhood.

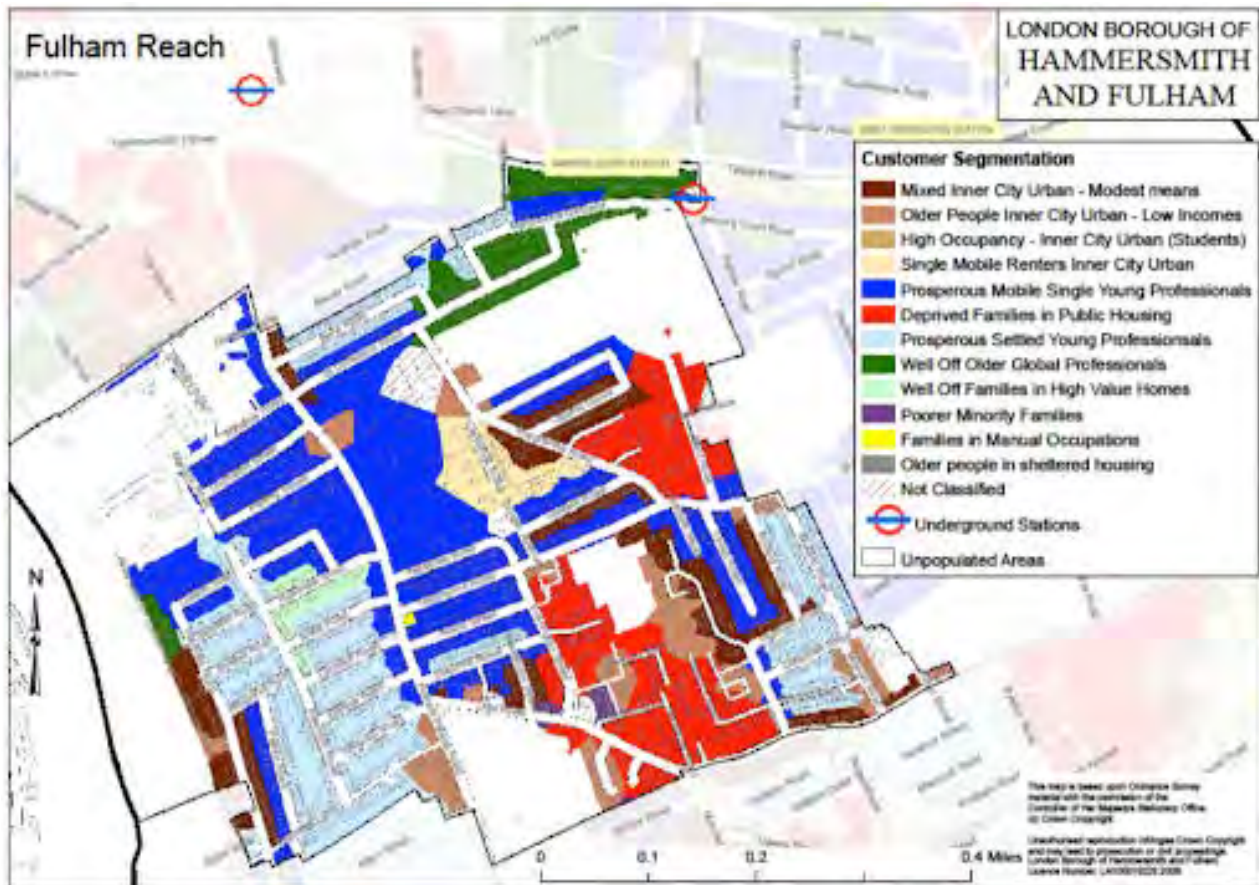
Are you willing and able to prayerfully and proactively develop our ministry? Are you inspired to expand our outreach in the local area particularly around the Field Road and Bayonne housing estates? Are you compelled by the Spirit and the Word of God to embed yourself (and your family if relevant) in our community and to join us in the next chapter of our journey together at St Alban's, desiring to see a great awakening of faith in Jesus transforming Fulham and beyond? Then we would love to hear from you.

Thank you for your time in considering this exciting opportunity.



Appendix

Fulham Reach Ward 2018 census info



https://www.lbhf.gov.uk/sites/default/files/section_attachments/fulham_reach_ward_profile_2018.pdf